

Master's specialisation **Clinical Neuropsychology**

Karin van der Hiele



**Universiteit
Leiden**
The Netherlands

Index

1. Programme overview
2. Programme schedule
3. Mandatory courses
4. Electives
5. Thesis
6. Internship
7. Planning your master's programme



A quick overview

Programme structure

- Four mandatory courses 20 EC
- Two electives 0/10 EC
- Thesis 20 EC
- Internship 10/20 EC

Degree

- MSc in Psychology

Type of programme

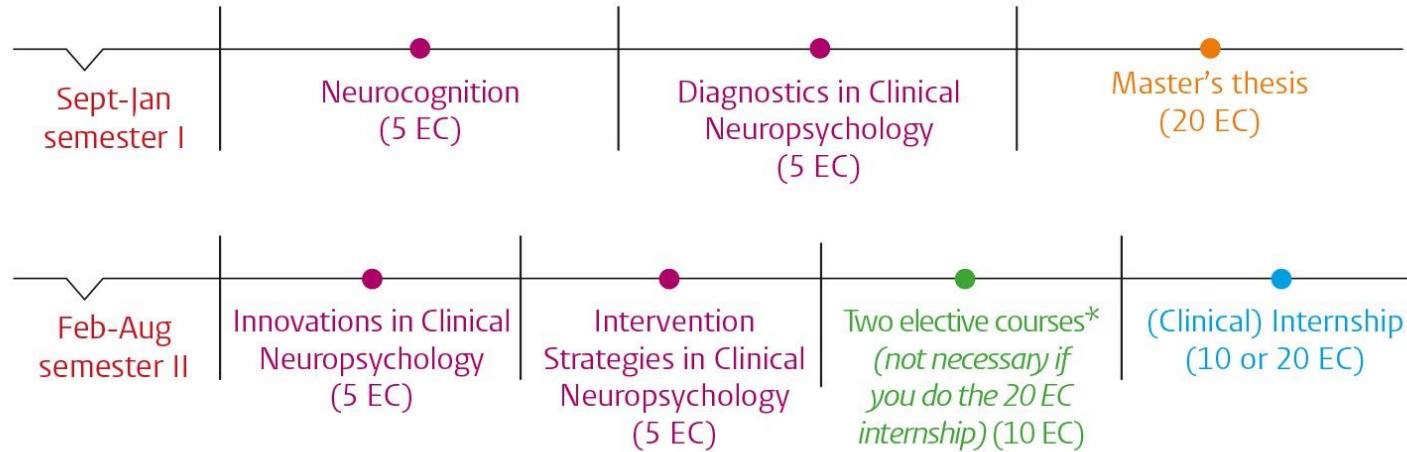
- Full time
- 60 EC

Starts in

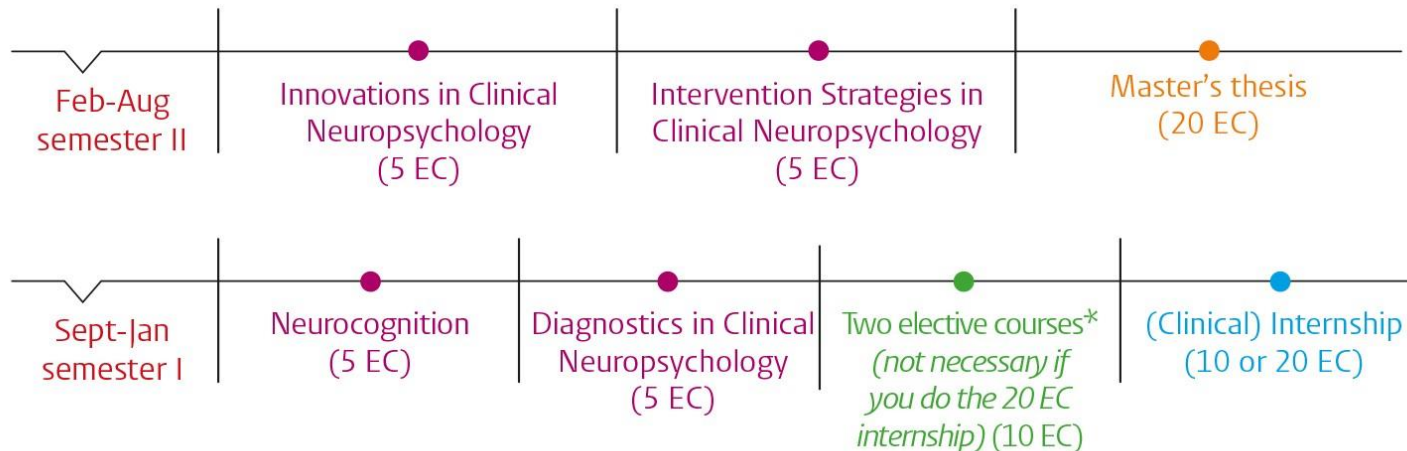
- September
- February

Programme outline

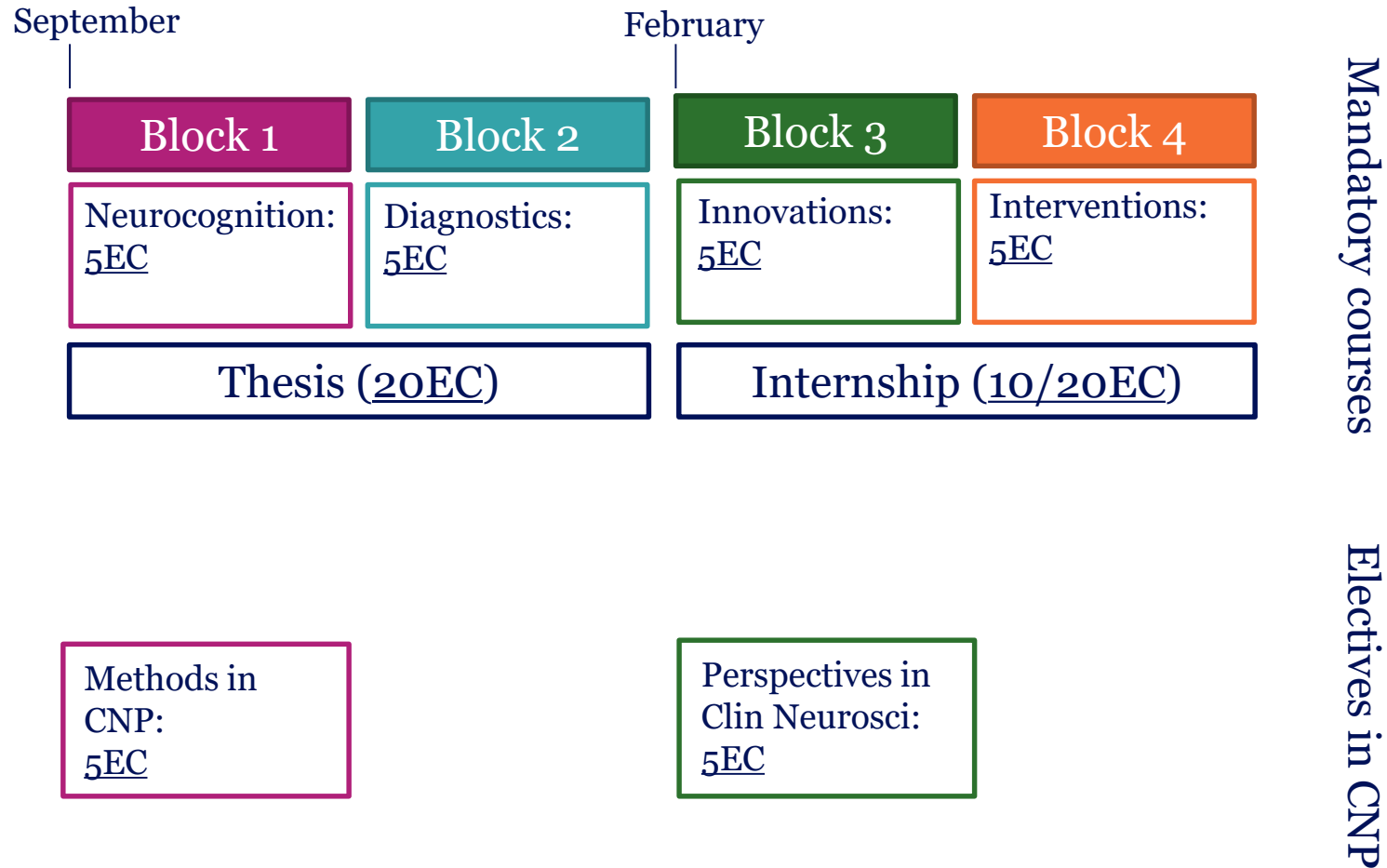
September intake



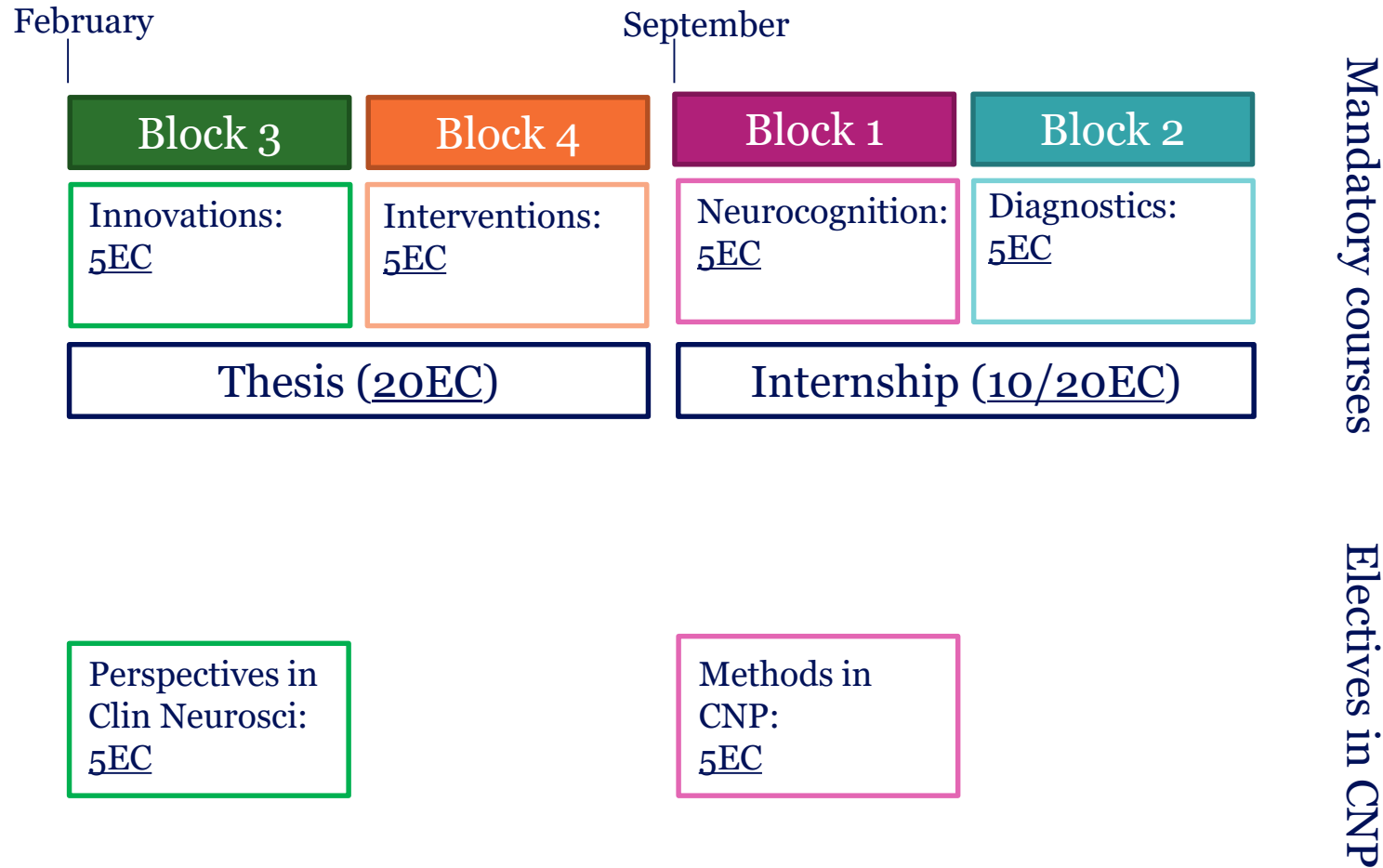
February intake



Programme schedule - Sept start



Programme schedule - Feb start



Mandatory courses

- Neurocognition
- Diagnostics in Clinical Neuropsychology
- Innovations in Clinical Neuropsychology
- Intervention Strategies in Clinical Neuropsychology

Electives

- Perspectives in Clinical Neuroscience
- Methods in Clinical Neuropsychological Research
- ... Electives offered by other master's specialisations

Thesis (20 ECTS)

Tasks:

- Study the literature
- Develop a research question and research design (*proposal*)
- Statistically analyse the **data** →
- Write a *thesis*

Data options:

Data collection
(optional)

External parties sometimes call this a '*research internship*'.

Existing database

Existing database

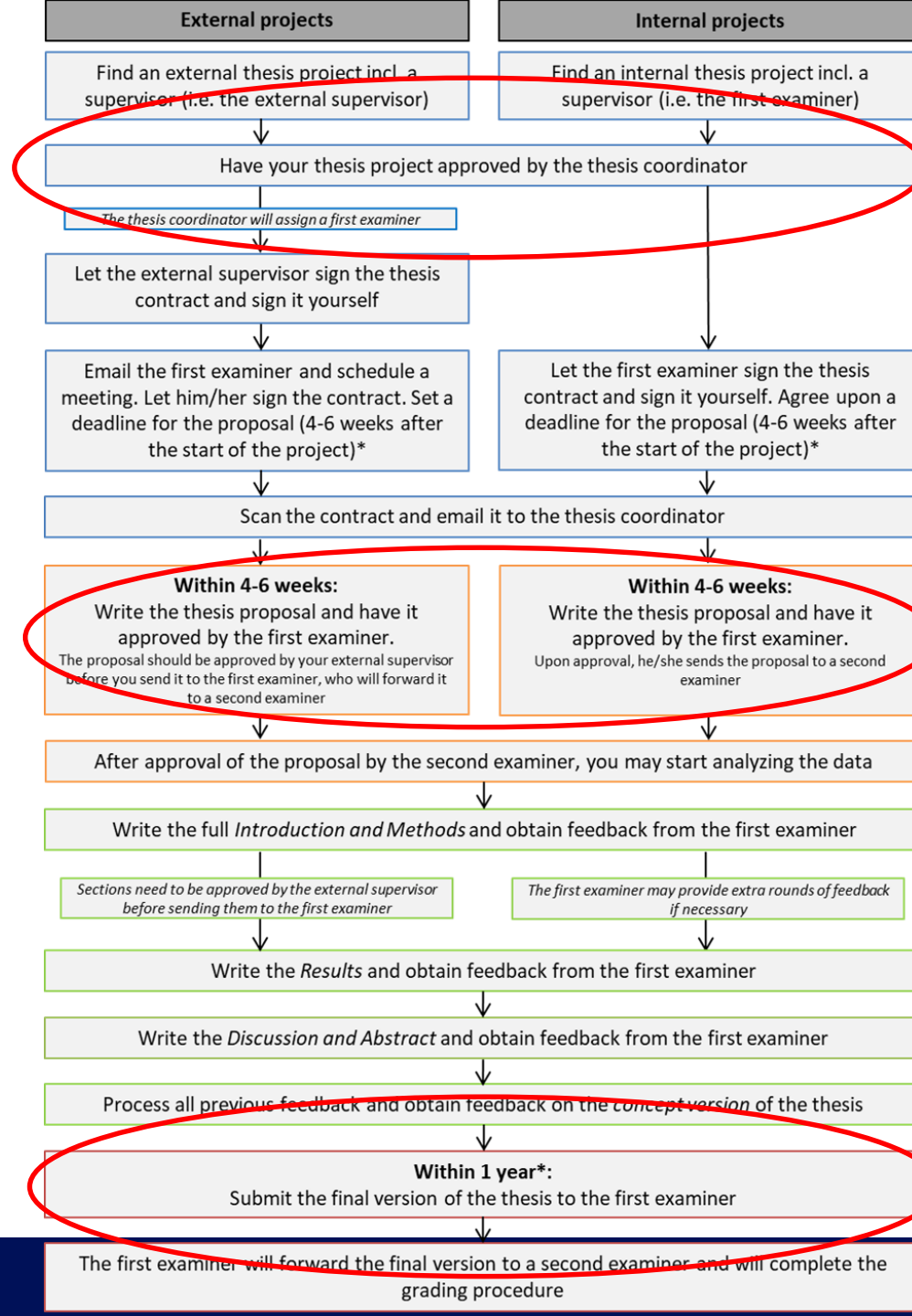
+
Data collection for another project

Meta-analysis

Thesis

Timeline

- You may start your thesis project **at any time** during the academic year
- Proposal; **4-6 weeks** after your first day of the thesis project
- Final thesis; **within 1 year** after the start of your thesis project



Finding a thesis project

Students are responsible for finding a thesis position

Considerations:

- Field of interest; specific disorder or cognitive function?
- Location; willing to travel or not?
- Organisation; large UMC or smaller institute?

Where to look for positions?

- Brightspace; overview of research centers, open vacancies
- Websites of organisations you are interested in (check weekly)
- Your network (peers)

Internship

- Gaining experience in the work field
- Professional skills in a practical or research area
- Connect (clinical) skills with scientific knowledge or research
- Supervision by professionals

3 types of internships

10 EC Internship

- 280 hours (7 fulltime weeks)
- Clinical, research, ...

20 EC Clinical Practical Internship

- 560 hours (14 fulltime weeks)
- Neuropsychological examination
- Meeting NIP requirements

10 EC Internal Practical Internship

- Designed for international students (3-4 positions per year)
- Supervised by Chris Verhoeven (Health and Medical Psychology)

Finding a position

Start looking in time (hospitals, psychiatry, forensic institutes, specialised treatment centers (e.g., Autism Centre), nursing homes, rehabilitation centers)

- Vacancies Brightspace, websites, open applications (contact by phone!)
- List of previous internship organisations for available positions and/or inspiration
- Your network

Before the start of the programme

Sign up for courses

- When?
 - Course planning: *June and November*
 - Course enrolment: *July and December*
- Instructions on [student website](#) of Leiden University

Be present at the [Master's Kick Off](#)

- We expect you to attend the kick off. More information will follow via email

**We are looking forward to
welcoming you at Leiden University!**



**Universiteit
Leiden**
The Netherlands